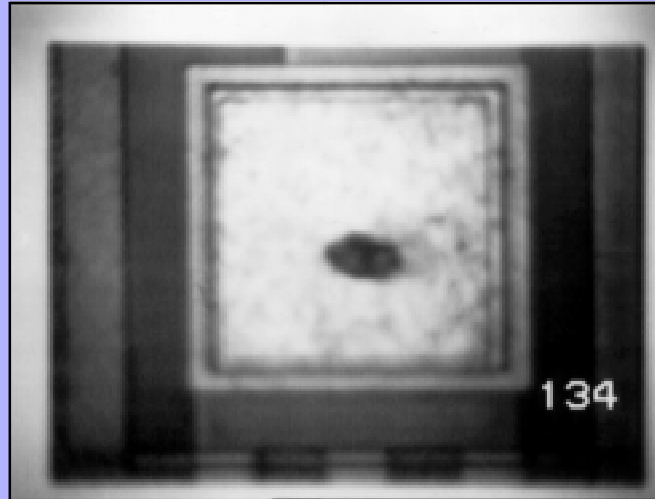
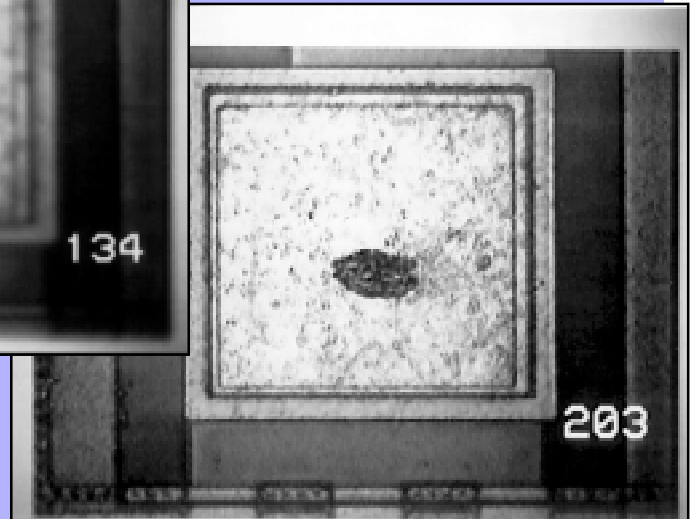


# Boeckeler® IMG-40

## Focus Indicator



*Left: Video print of an unfocused image of a defect. Right: the same image after being focused using the IMG-40 focus indicator (note focus display in lower right).*



*Focus images  
objectively for:*

- ✓ Video Microscopy
- ✓ Specimen Observations
- ✓ Inspections
- ✓ Video Print Archives

### FEATURES

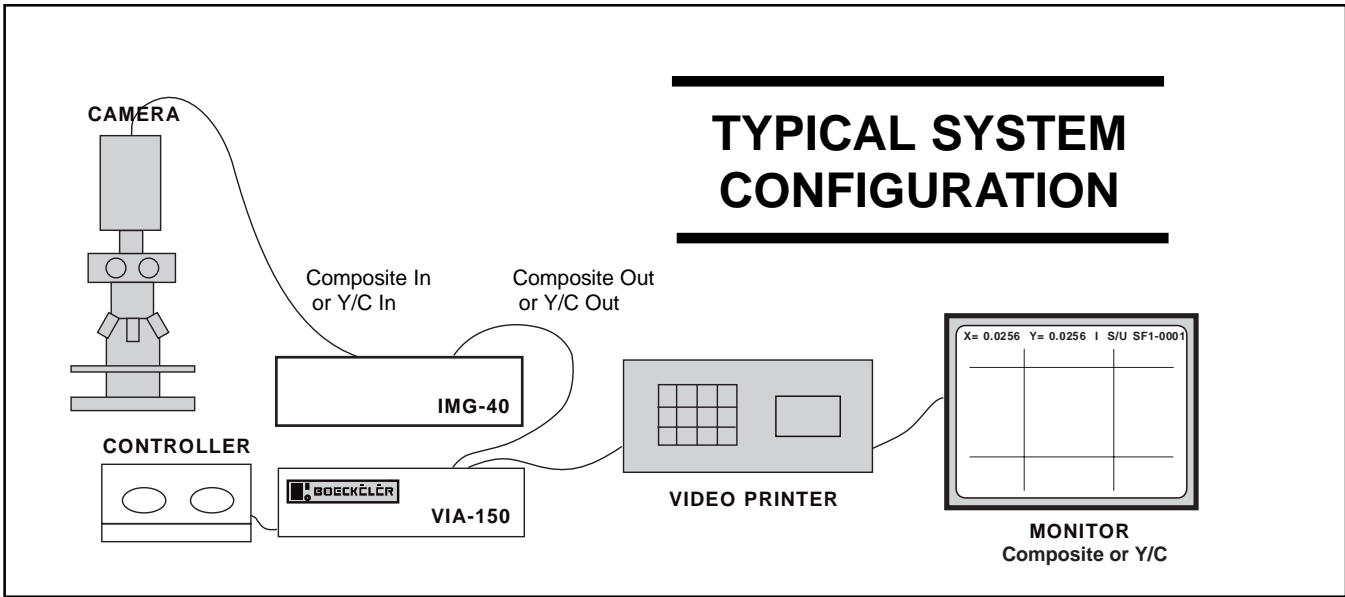
- **Numeric display of focus.** The higher the number, the more in focus the video image.
- **Positionable location of numeric display** to one of four corners of the video image.
- **Selectable window** in which focus area may be targeted. Window can be activated at the flip of a switch.
- **RS-232-C interface** allows ASCII transmission of focus indicator's numeric display for use with computer printers or for feedback to auto-focusing.
- **Simple component** is connected between a video source and monitor. Compatible with NTSC composite and Y/C video equipment.

### BENEFITS

- **Eliminates subjective focusing** of the specimen or manufactured part to aid in accurate and quick inspection and image documentation.
- **Eliminates eyestrain** in video microscopy or any application which requires focusing a video image with the naked eye. Users may refer to a focus number, rather than depend on their own vision to determine image sharpness.
- **Supplies a means for a repeatable focus.** Through RS-232-C ASCII transmission of focus numbers, operators may store focus levels for future viewing of the same or similar image.
- **Easy to use.** Anyone can operate the IMG-40 focus indicator with relatively little instruction or installation know-how.

**BOECKELER®**

The IMG-40 may be used to complement  
Boeckeler VIA-® video measuring products



## TECHNICAL SPECIFICATIONS, WARRANTY, AND SYSTEM REQUIREMENTS

### IMG-40 Focus Indicator

Video Input	NTSC composite, (BNC x 1): 1.0Vp-p; 75 ohms - or - Y/C (4-PIN MINI): luminance .714V p-p; chroma .286V p-p; 75 ohms.
Video Output	NTSC composite (BNC x 1): 1.0Vp-p, 75ohms - or - Y/C (4-PIN MINI): luminance .714Vp-p; chroma .286V p-p; 75 ohms.
Ambient Temp.	0°C to 55°C (32°F to 157°F)
Power Supply	110/220 VAC; .25Amp (60Hz)
Dimensions	9.9"(W) x 2.6" (H) x 7.0" (D)
Approx. Weight	4 lbs.
Warranty	1 Year Parts and Labor

### YOUR BOECKELER DEALER:



**Boeckeler Instruments, Inc.**  
 4650 South Butterfield Drive  
 Tucson, Arizona 85714  
 PHONE: (520) 745-0001  
 TOLL-FREE IN U.S. : (800) 552-2262  
 FAX: (520) 745-0004  
 WEBSITE: <http://www.boeckeler.com>

\* Made In The USA\*